



KONGSBERG

FOSFOR KONFERANSE 2019

K-Sim[®] Fishery

04.12-2019

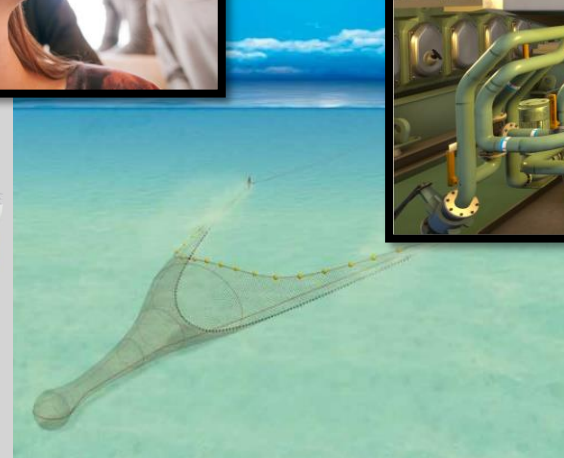
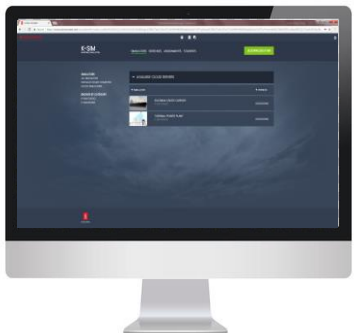
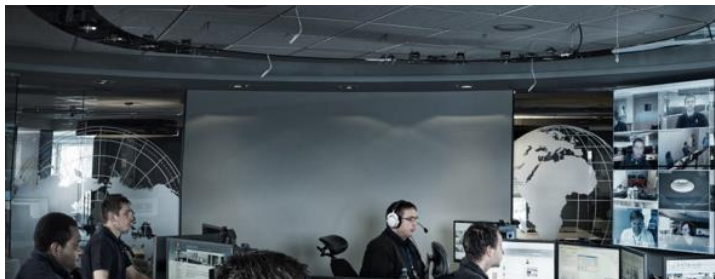
Bjarne Torkelsen
Area Sales Manager Nordic
Maritime Simulation
Kongsberg Digital



KONGSBERG

Maritime Simulation, Kongsberg Digital

«Bruk av simulator i fremtidens undervisning»



WORLD CLASS – Through people, technology and dedication

KONGSBERG PROPRIETARY - See Statement of Proprietary information

KONGSBERG PROPRIETARY – See Statement of Proprietary Information



KONGSBERG

KONGSBERG – A DIVERSIFIED COMPANY



KONGSBERG MARITIME

Global market leader within offshore, subsea and merchant marine applications

- Dynamic positioning
- Integrated automation and control systems
- Hydroacoustic technologies
- Solutions for sustainable fisheries
- Autonomous underwater vehicles, underwater robotics



KONGSBERG DEFENCE & AEROSPACE

Modern product portfolio in growing defence and aerospace niches

- 5th generation strike missiles
- Air defence
- Command & control systems for land and naval applications
- Complex lightweight structures for the F-35
- Tactical communication
- Space technologies, satellite services and surveillance
- PROTECTOR RWS
- PROTECTOR MCT-30 Medium Caliber Turret
- Other specialized remote weapon stations



KONGSBERG DIGITAL

Provider of next generation digital solutions to customers within maritime, oil & gas, and renewables & utilities

- Oil and gas software
- Maritime simulation
- Renewables and utilities
- Digital Platform
- Group Digital Center of Expertise

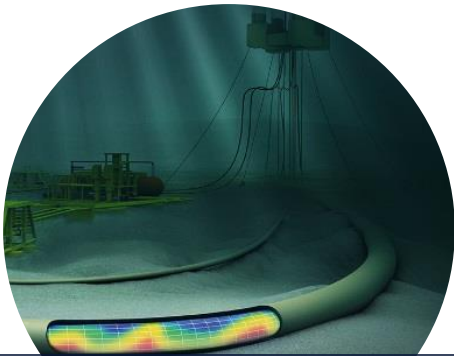
WORLD CLASS – Through people, technology and dedication

KONGSBERG PROPRIETARY - See Statement of Proprietary information



KONGSBERG

KONGSBERG DIGITAL MARKETS



OIL & GAS



RENEWABLES
& UTILITIES



MARITIME SIMULATORS



KOGNIFAI

WORLD CLASS – Through people, technology and dedication

KONGSBERG PROPRIETARY - See Statement of Proprietary information



KONGSBERG

TRANSPORT

CLIMATE CHANGE

TECHNOLOGY IS THE
MAIN DRIVER FOR SOLVING OUR
SUSTAINABILITY ISSUES

THE OCEANS PLAY
A KEY ROLE

ENERGY

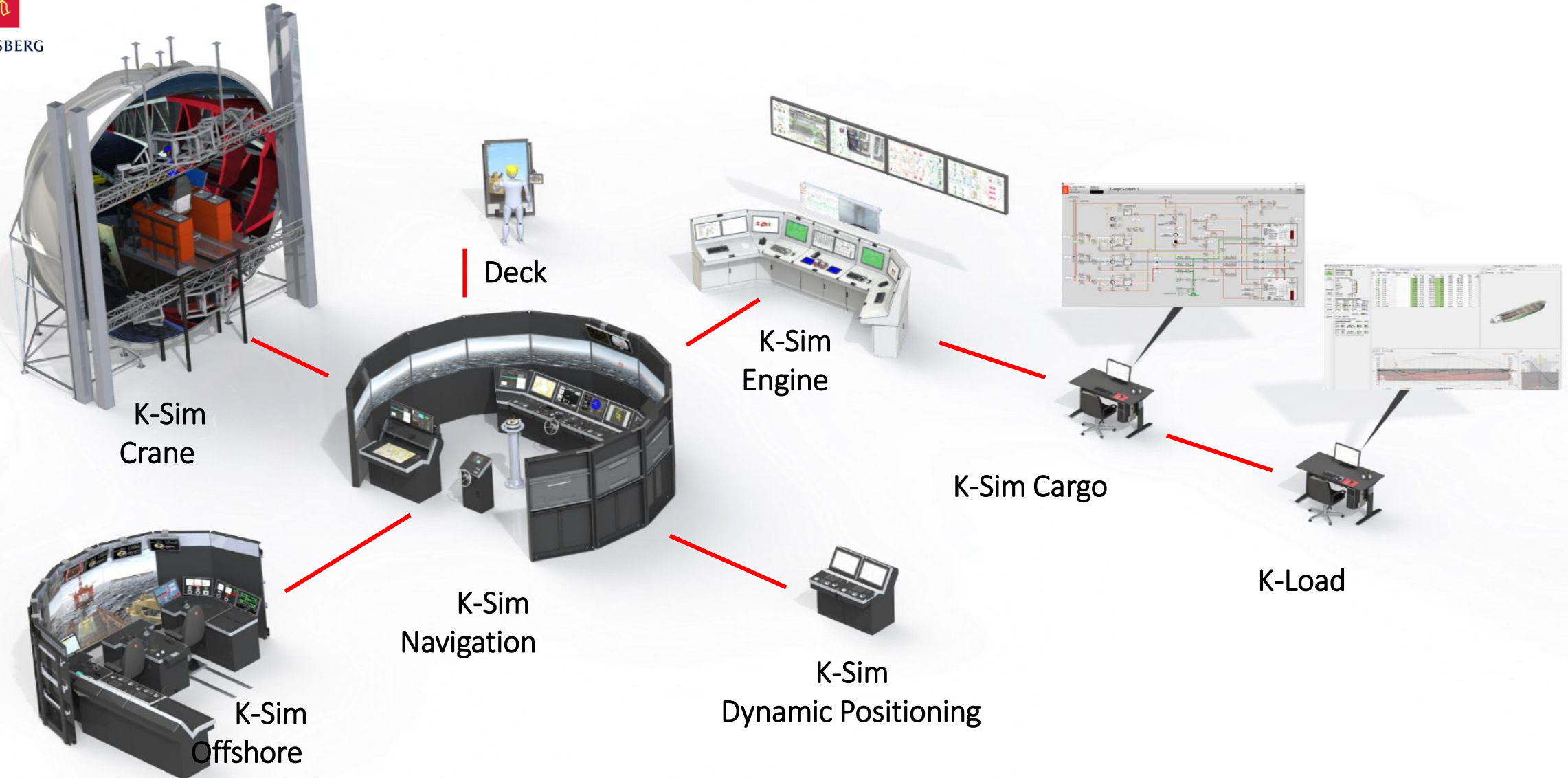
FOOD

DEFENCE AND SECURITY

Integrated solutions allow team collaboration across disciplines



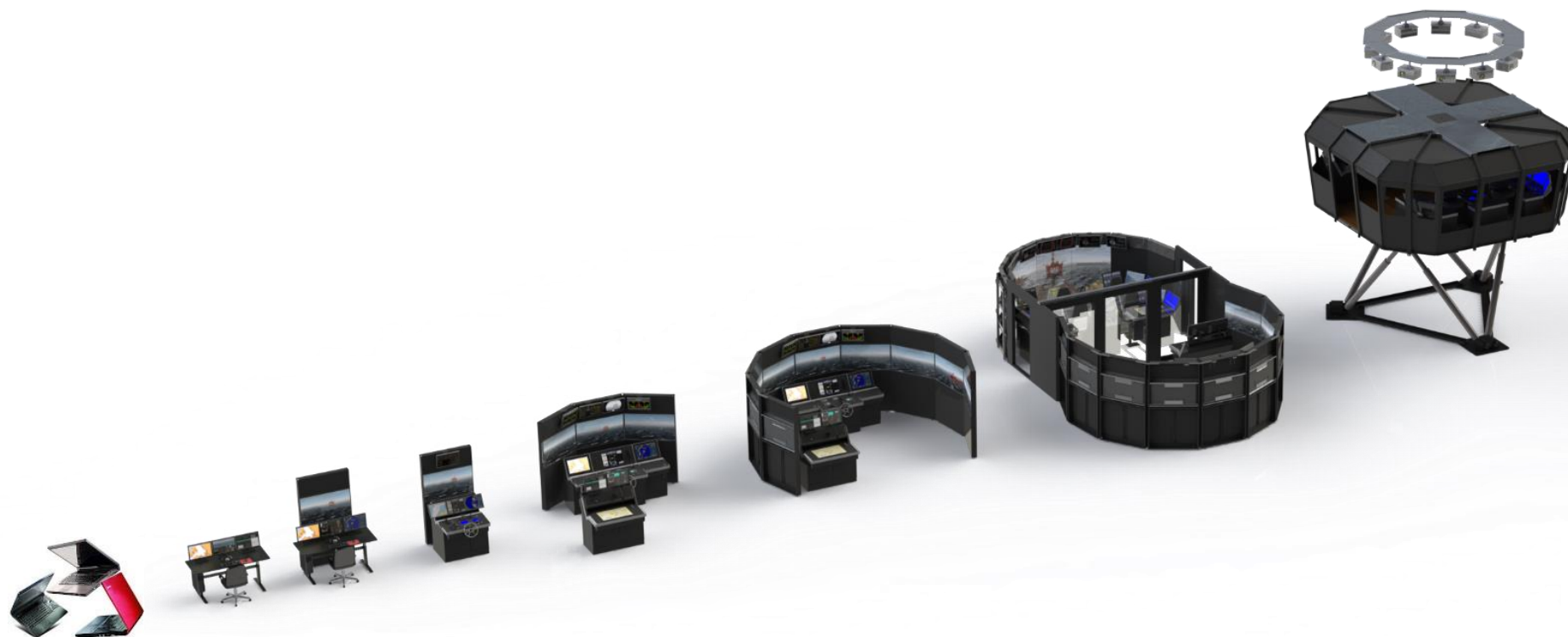
KONGSBERG



WORLD CLASS – Through people, technology and dedication

KONGSBERG PROPRIETARY – See Statement of Proprietary information

«Anytime & Anywhere» is a service with no hardware requirements and no need for local configuration



ANYTIME &
ANYWHERE

DESKTOP

PART TASK TRAINER

FULL MISSION



KONGSBERG

Why should we use Fishery Simulator?

- Increased global focus on fishery education due to:
 - Demands for a sustainable fishery industry
 - Implementation of STCW-F requirements
 - Increased safety focus
 - Higher skills = better efficiency = cost savings
- Cost effective training
- Realistic form for training

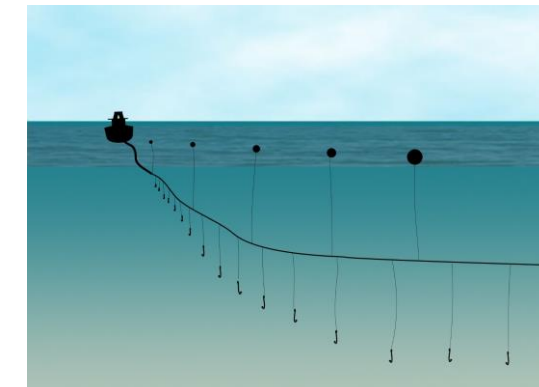
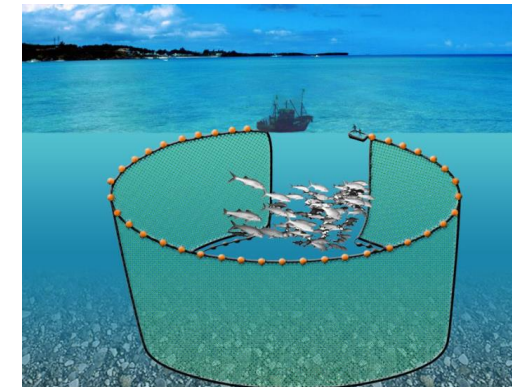
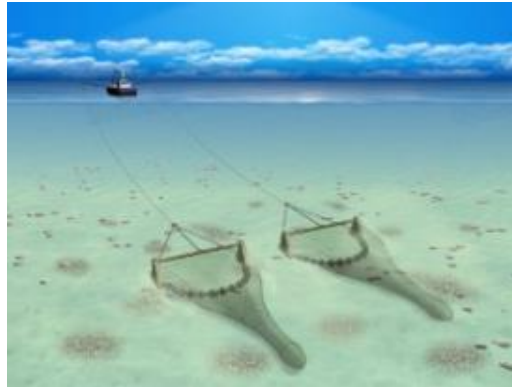
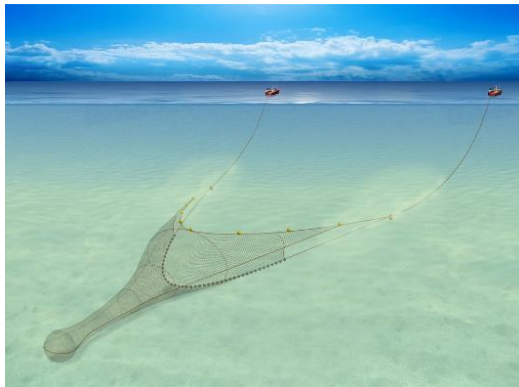
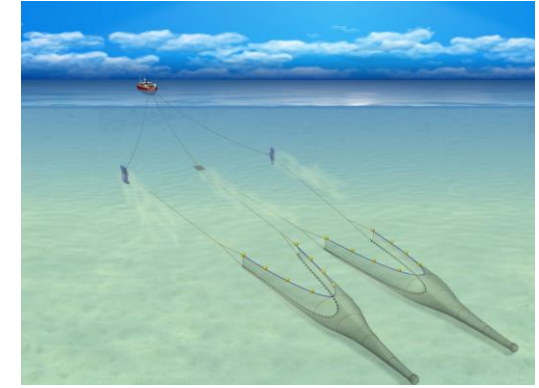
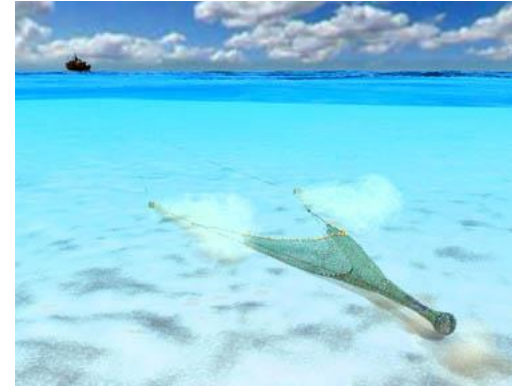




KONGSBERG

Many Fishing methods, gives many Simulator requirements

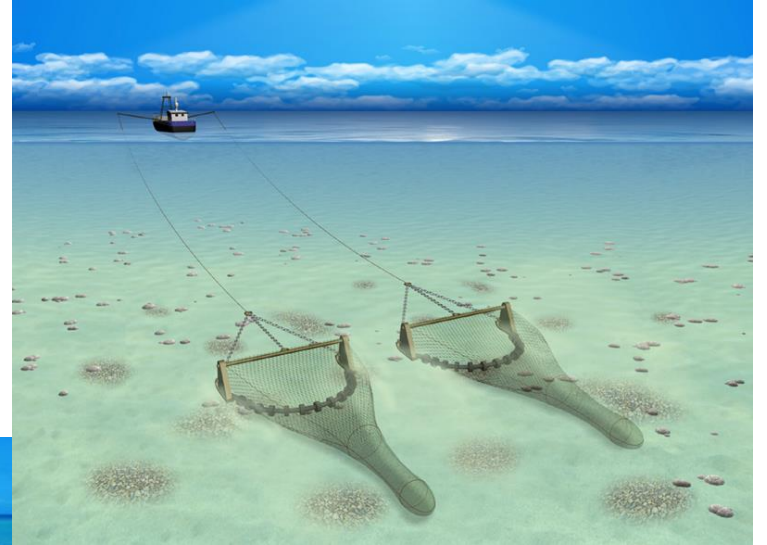
- Fishing vessels
- Fishing gear
- Simulator functions
- Fishing Instruments
- Simulator Layouts



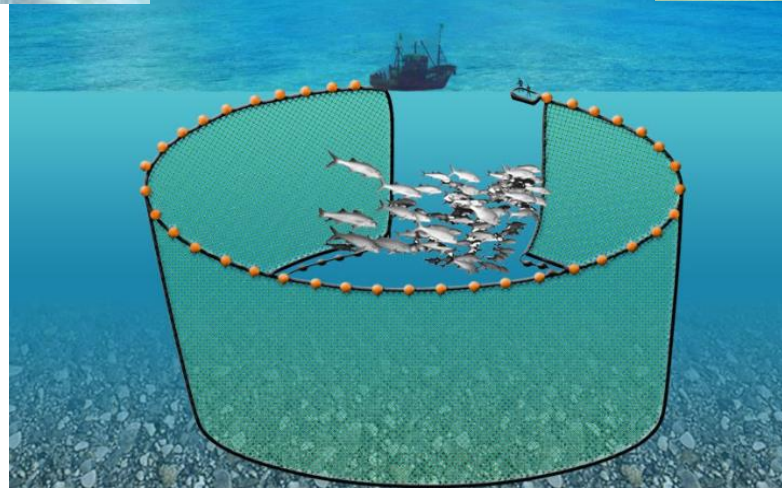


KONGSBERG

K-Sim Fishery – Supported fishing methods



- Bottom trawling
- Beam trawling
- Purse Seine





KONGSBERG

K-Sim Fishery – Kongsberg Amphitrite



WORLD CLASS – Through people, technology and dedication

KONGSBERG PROPRIETARY - See Statement of Proprietary information

K-Sim Fishery – Advanced deck operations



KONGSBERG



WORLD CLASS – Through people, technology and dedication

KONGSBERG PROPRIETARY - See Statement of Proprietary information



KONGSBERG

K-Sim Fishery – Avatars on deck



WORLD CLASS – Through people, technology and dedication

KONGSBERG PROPRIETARY - See Statement of Proprietary information



KONGSBERG

K-Sim Fishery – Trawl in water



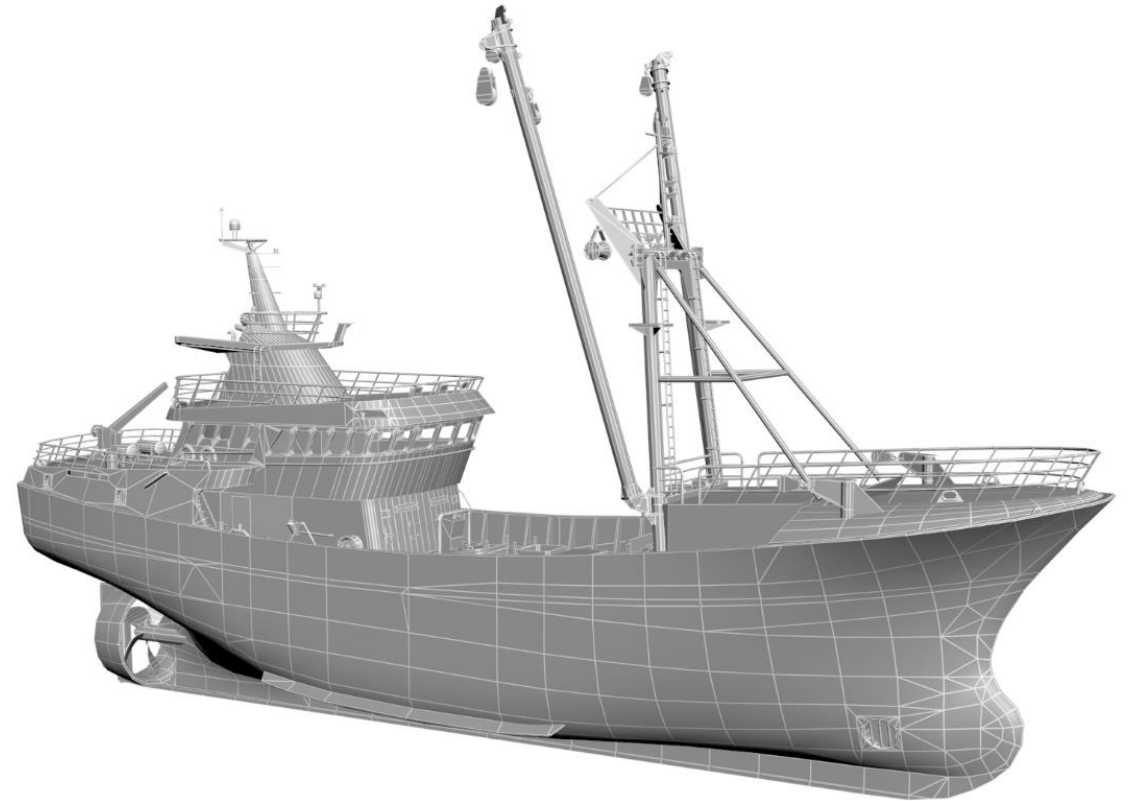
WORLD CLASS – Through people, technology and dedication

KONGSBERG PROPRIETARY - See Statement of Proprietary information



KONGSBERG

K-Sim Fishery – Beam trawlers



WORLD CLASS – Through people, technology and dedication

KONGSBERG PROPRIETARY - See Statement of Proprietary information



KONGSBERG

K-Sim Fishery – Purse Seine model



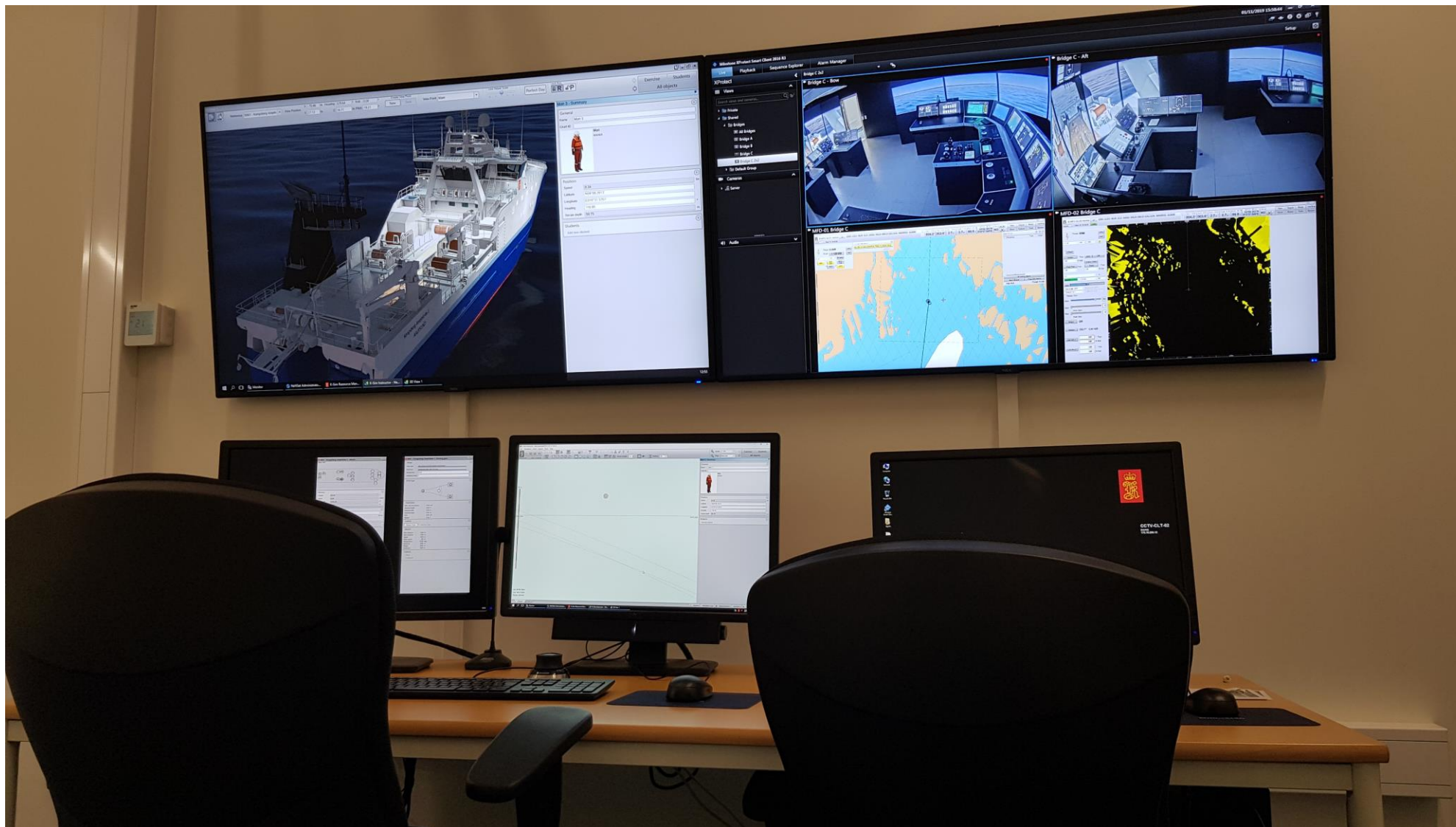
WORLD CLASS – Through people, technology and dedication

KONGSBERG PROPRIETARY - See Statement of Proprietary information



KONGSBERG

K-Sim Fishery – Instructor setup



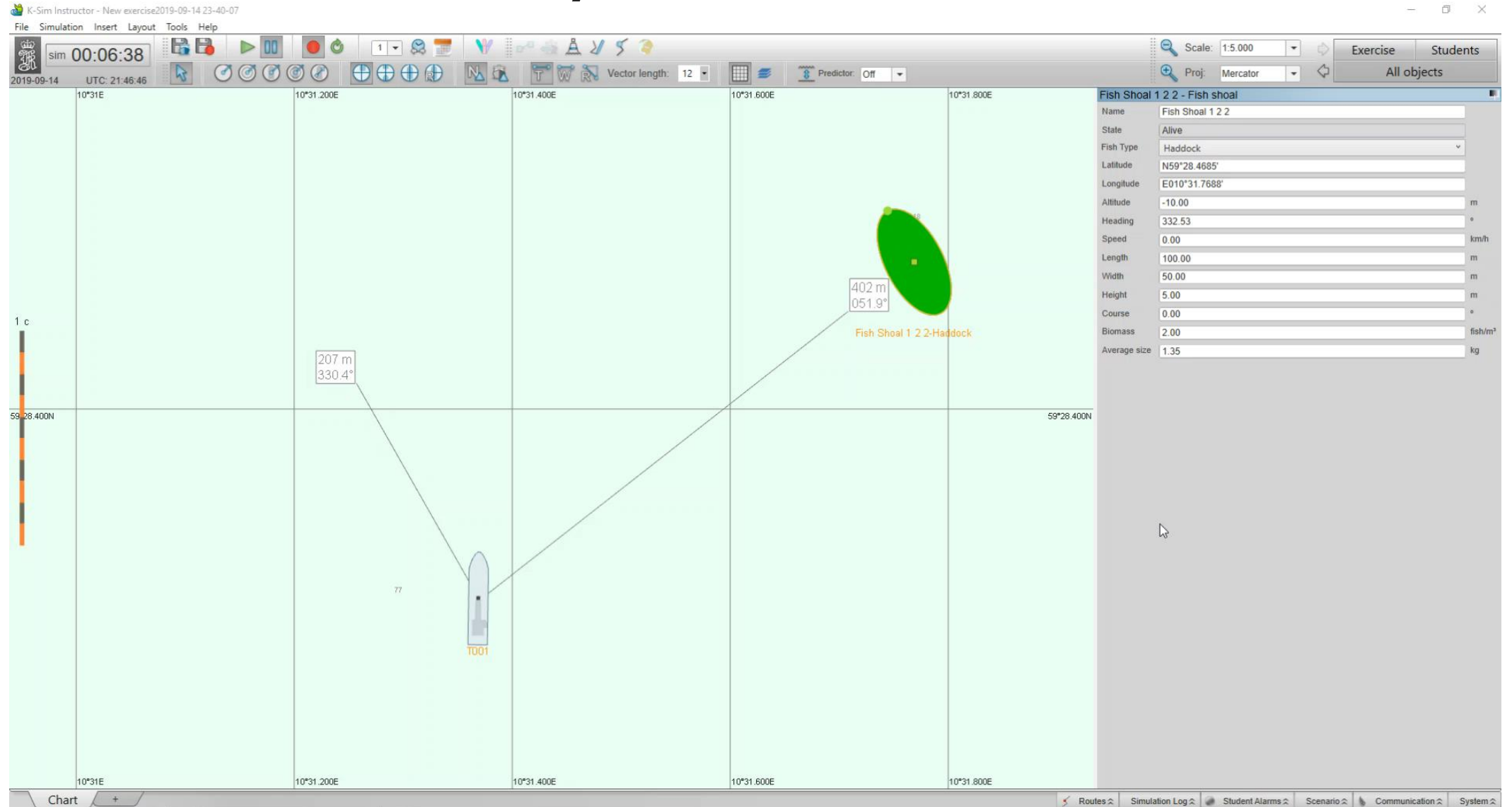
WORLD CLASS – Through people, technology and dedication

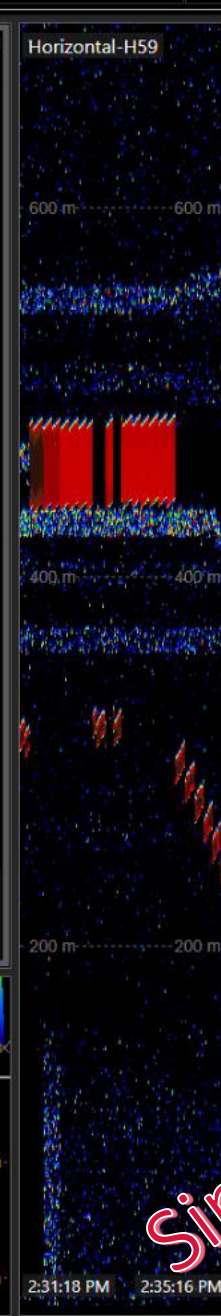
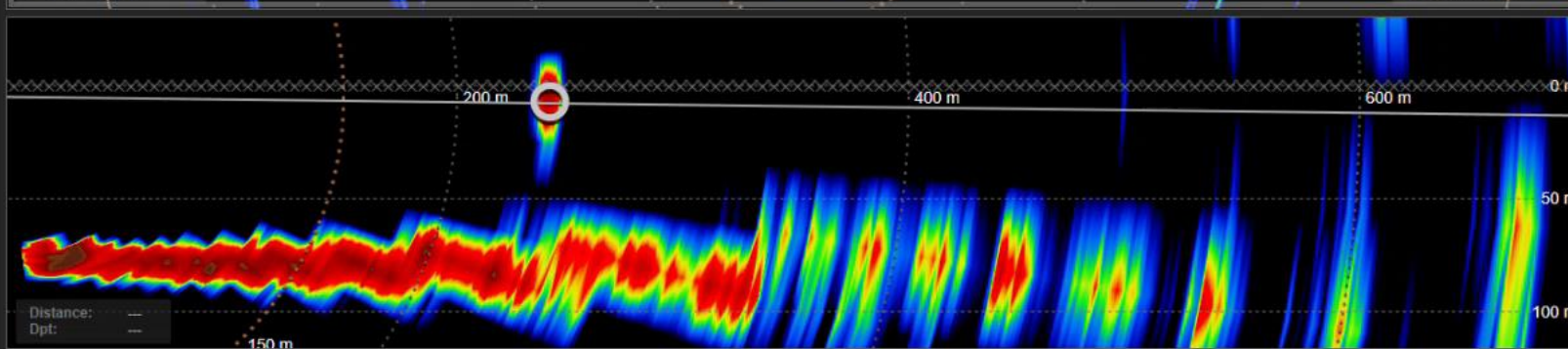
KONGSBERG PROPRIETARY - See Statement of Proprietary information



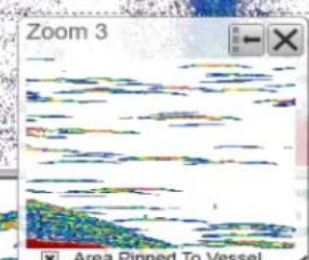
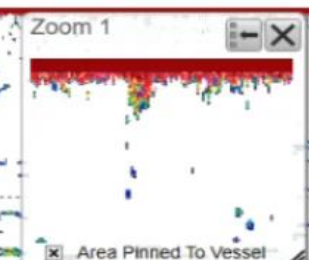
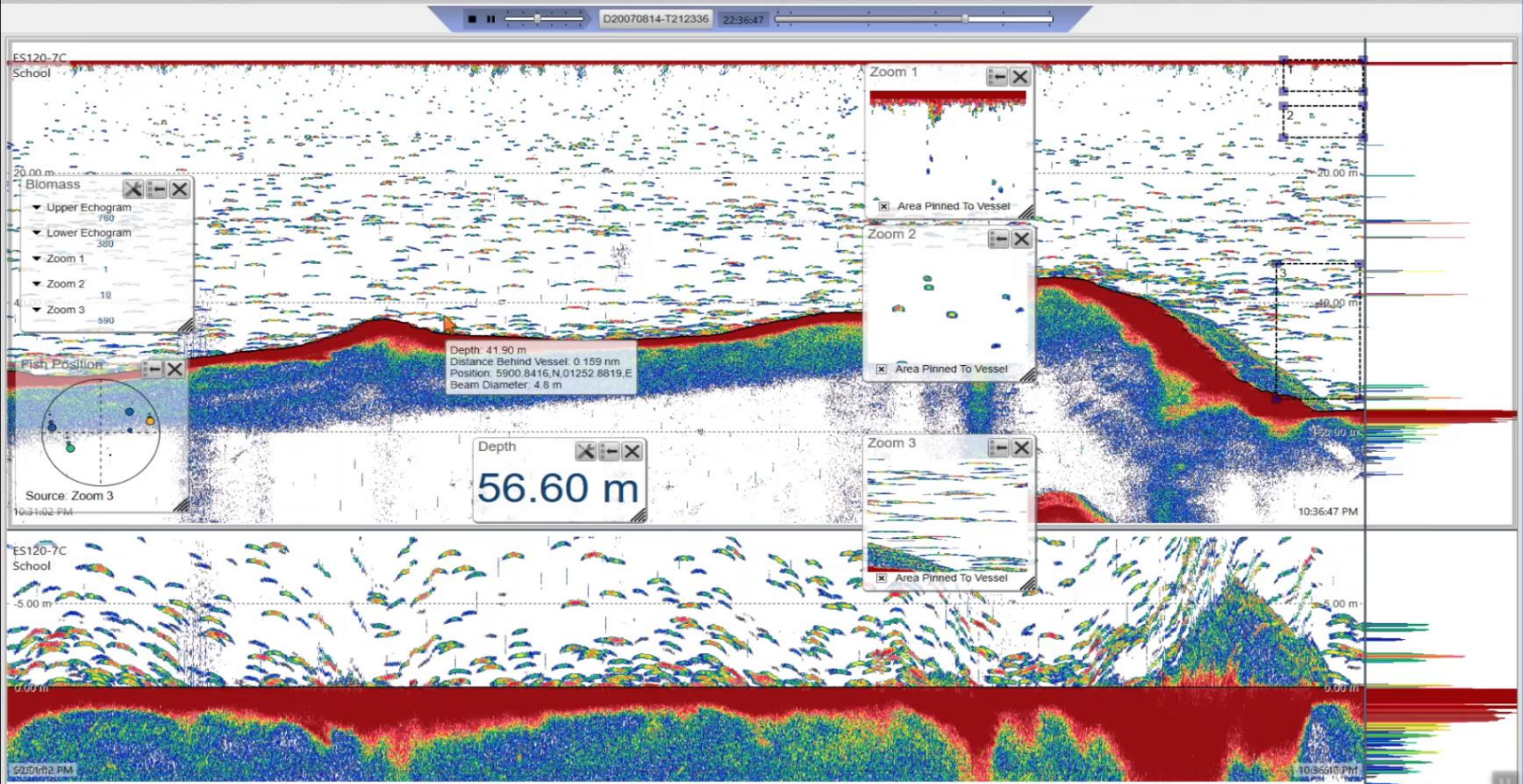
KONGSBERG

K-Sim Fishery Instructor - Fish in the Sea





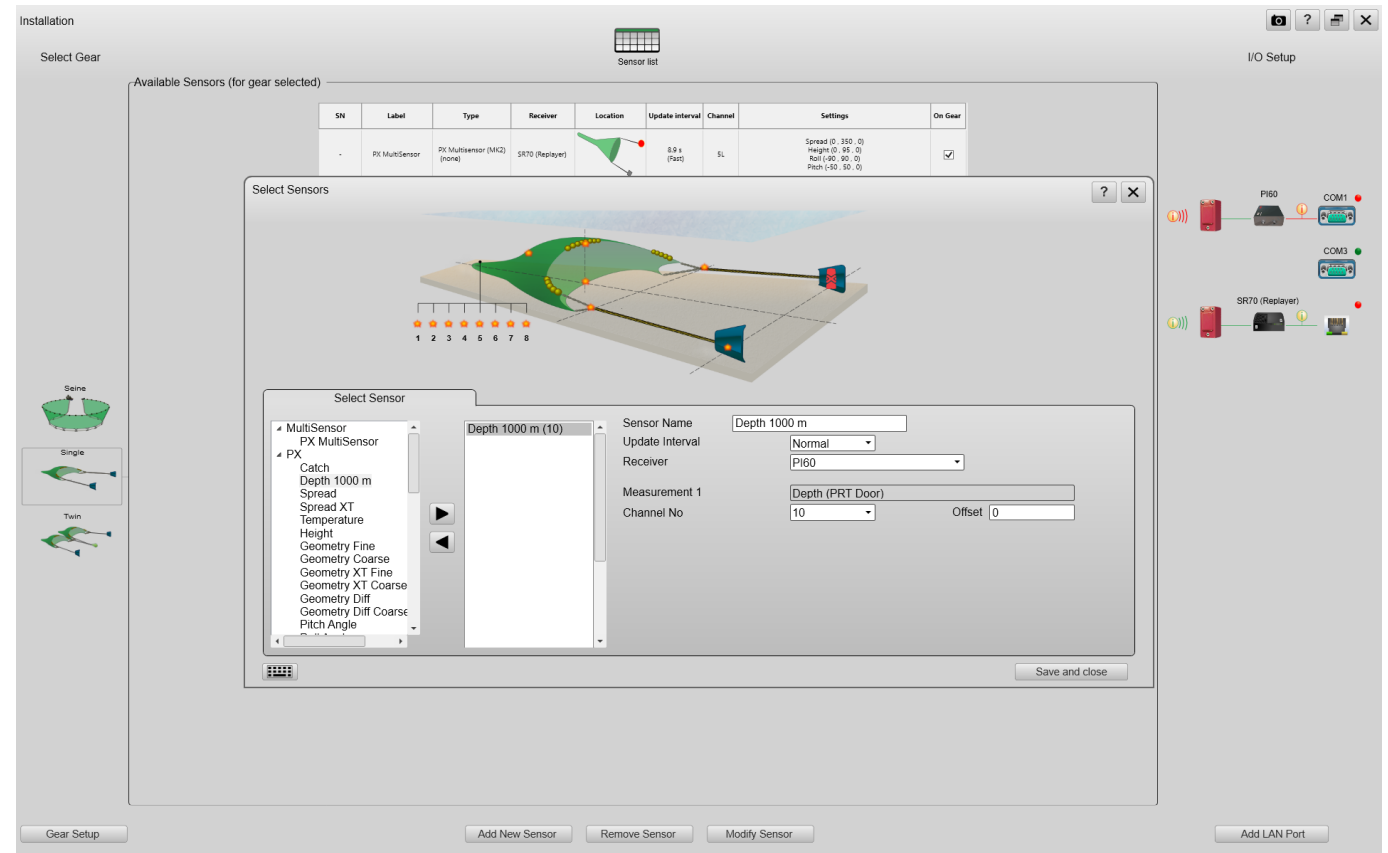
The screenshot shows the 'User Settings' menu. At the top are icons for a pin, a monitor, a wrench, a grid, and a flag. Below these are two main sections: 'Active' and 'Horizontal'. The 'Active' section contains settings for TVG (*20 Log R), Ping-Ping Filter (Off), Pulse Type (*Auto), Bandwidth (0.5 kHz), Frequency (26 kHz), Horizontal Tx Sector (*Omni), Vertical Tx Sector (*Auto), Range Projection (S), AGC (Medium), RCG (*2), Bottom Filter Threshold (Off), and Noise Filter (*Medium). Each setting has a minus sign on the left and a plus sign on the right. A large red watermark 'emulator footag...' is overlaid diagonally across the bottom half of the screen.





KONGSBERG

TV80 – Real Simrad Catch Control





KONGSBERG

TV80 – Real Simrad Catch Control

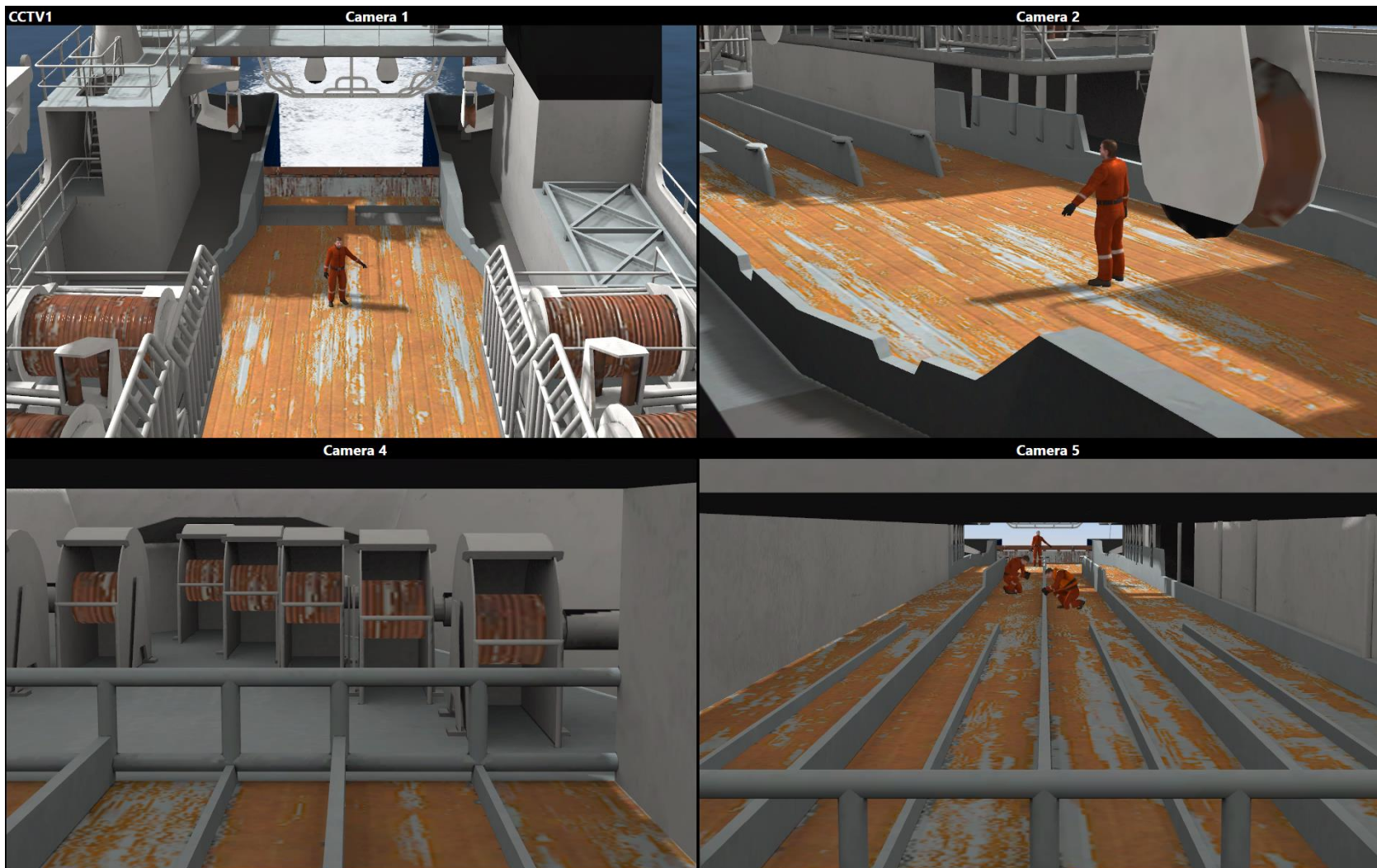


Simulator footage



KONGSBERG

CCTV





KONGSBERG

Advanced deck winch operations – Trawl on deck





KONGSBERG

Lofoten

Our very first
K-Sim Fishery Simulator
delivery





KONGSBERG

Simulator layout – Trawling and Purse Seine



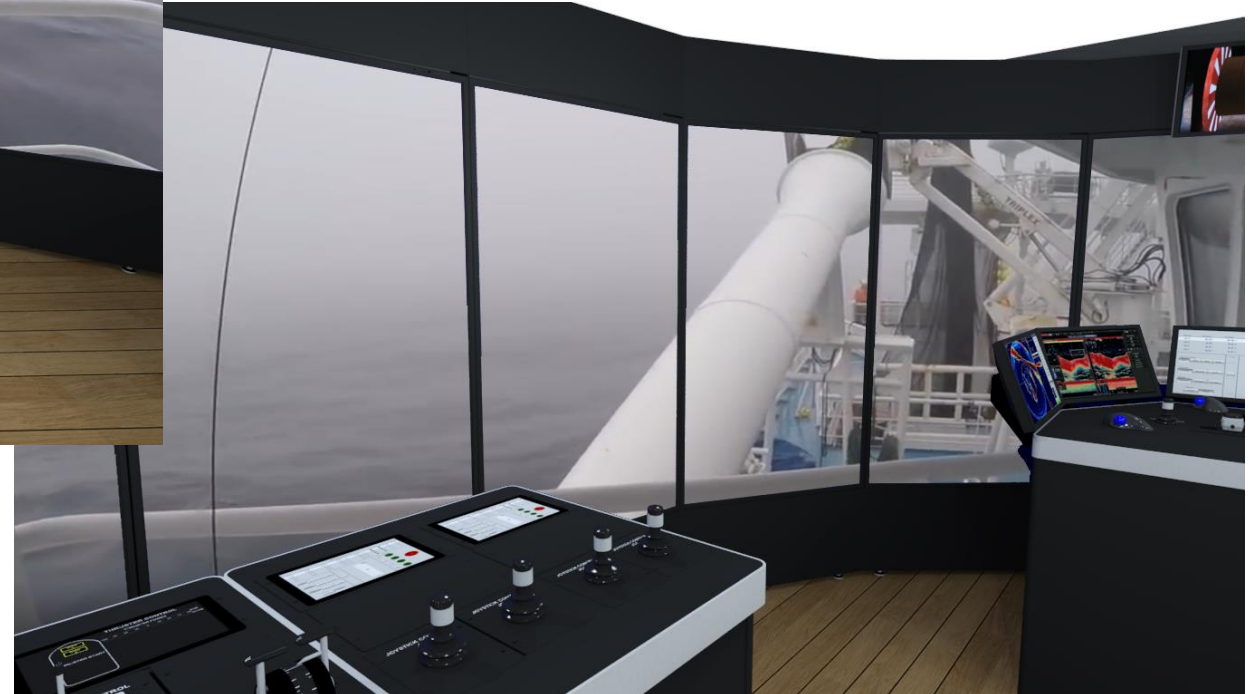
WORLD CLASS – Through people, technology and dedication

KONGSBERG PROPRIETARY - See Statement of Proprietary information



KONGSBERG

Simulator layout – Trawling and Purse Seine



WORLD CLASS – Through people, technology and dedication

KONGSBERG PROPRIETARY - See Statement of Proprietary information



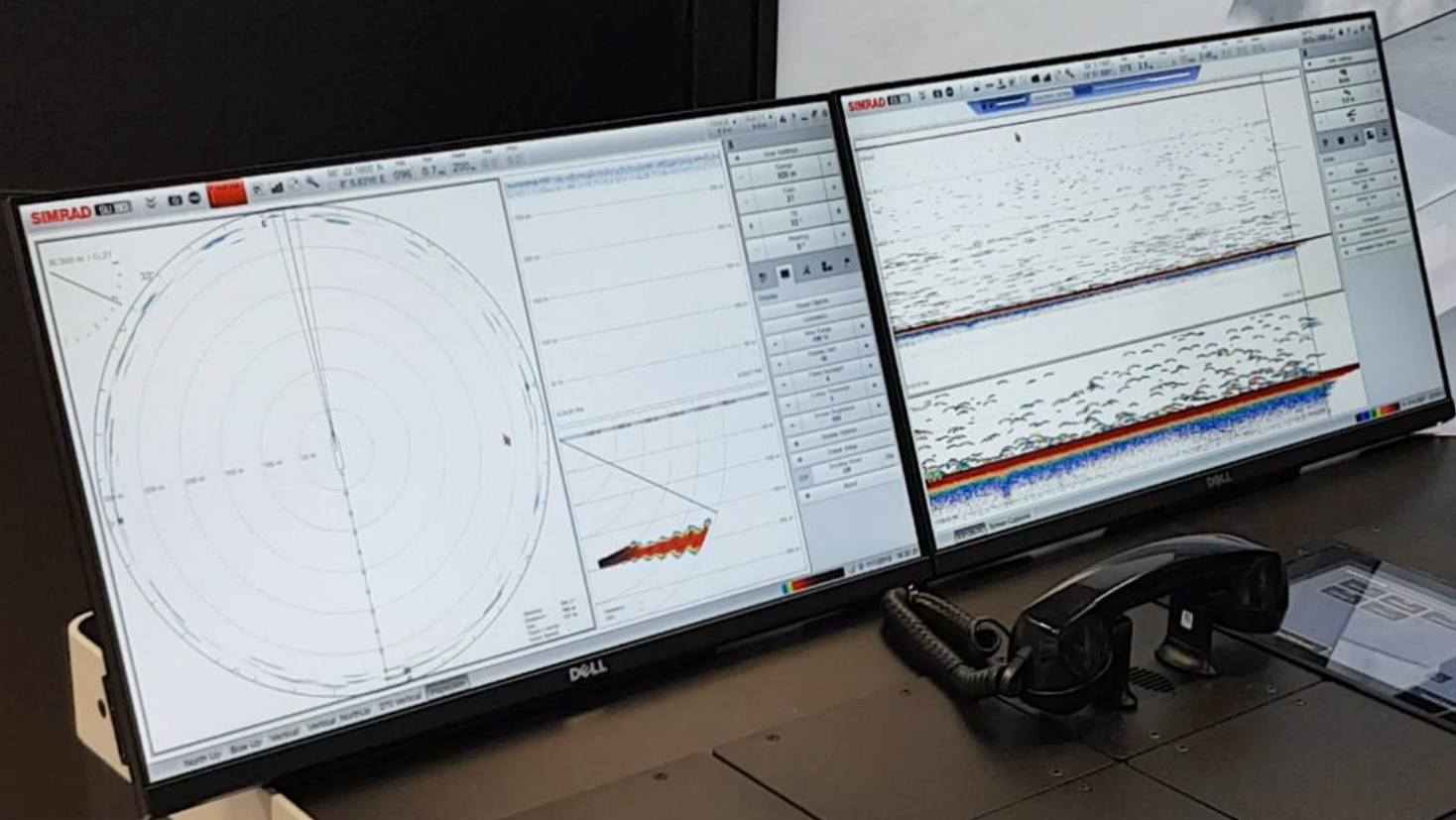
KONGSBERG

Simulator layout – Trawling and Purse Seine



WORLD CLASS – Through people, technology and dedication

KONGSBERG PROPRIETARY - See Statement of Proprietary information





KONGSBERG

Simulator layout – Beam Trawler



WORLD CLASS – Through people, technology and dedication

KONGSBERG PROPRIETARY - See Statement of Proprietary information



KONGSBERG

Instrument trainer



K-Sim Fishery – Alternative layout



KONGSBERG





KONGSBERG

Kongsberg Digital – Havbruk

New Model Customer specific "Aqua Work Boat"



New Model Customer specific "Live-hauling boat"



WORLD CLASS – Through people, technology and dedication

KONGSBERG PROPRIETARY - See Statement of Propriet



KONGSBERG

Trening innen Havfarm

Kongsberg Digital – Simulation and training



WORLD CLASS – Through people, technology and dedication

KONGSBERG PROPRIETARY - See Statement of Proprietary information



KONGSBERG

K-Sim Fishery benefits

DNV GL

STATEMENT OF COMPLIANCE

Statement No: 002/190626
DNV GL Id No: 10564901

Particulars of Product

Function Area: Fishery Operation Simulator
Class notation: Fishing vessel, Stern trawler
Name and type designation: K-Sim® Fishery

Particulars of Manufacturer

Manufacturer: KONGSBERG DIGITAL AS - Maritime Simulation
Manufacturer address: Horten, Norway

This is to confirm:
That the above product is found to comply with Class A- Standard for Certification of Maritime Simulators No. DNVGL-ST-0033 May 2019.

Application
The above Standard is based on requirements in the STCW Convention, Regulation I/12 and corresponding industry standard and guidelines.

This Statement is valid until **2019-12-26**, provided the requirements for the retention of the Statement will be complied with.

Issued at Sandefjord on 2019-06-26

for DNV GL
Capt. Aksel David Nordhagen
Manager Simulator Certification

This Statement is subject to terms and conditions covered. Any significant change in simulation performance may render this Statement invalid.
Form code: MSD 303 Revision: 2019-03 www.dnvgl.com Page 1 of 4
© DNV GL 2014. DNV GL and the Horizon Graphic are trademarks of DNV GL AS.

- Meets STCW-F and DNV GL's (class A,B,C) training requirements
- Realistic training scenarios through advanced simulation of vessel- and equipment behavior in a realistic hydrodynamic, physical and visual environment.
- Increases the efficiency of fishery operations
- Safe environment for training of fishery operations. Education is no longer a Father - Son thing.
- Enables the fishing industry to do a more economical fishery
- Add on functionality to existing K-Sim Navigation Simulator
- Realistic fish finding training by integration of real market leading Simrad fishing instruments: Beam Echo Sounder and Omni Directional Sonar and Catch Monitoring System



Building Vital Seaskills

Learning Objectives

K-Sim Fishery allow students to :

- Train on utilizing the vessel's navigational equipment
- Learn how to be efficient and optimize working hours
- Learn how to optimize fuel consumption
- Choose the best routes and vessel position
- Carry out appropriate maneuvers to control the fishing gear to ensure quantity and quality of the catch.
- Familiarize with as well as operate different types of fishing gear
- Build understanding that different fishing techniques require different approaches and that different fish species behave in different ways.
- Learn how to plan a fishing campaign, find, catch, and safely and efficiently store the fish, whilst monitoring vessel stability during the loading process.



KONGSBERG

Thank you for your attention!

